



MD HELICOPTERS

2009

ACCESSORIES CATALOG



Jeff Shapiro
President/CEO

DART Helicopter Services: We Engineer Solutions

This 2009 catalog is our biggest ever – with more than 1,000 new solutions engineered to help meet your operational challenges.

There has never been a better time to be part of the most exciting industry in the world. Presented with extraordinary opportunities for growth and expansion, DART has strategically focused only on those that support our core mission — providing you with helicopter accessories that make your operation safer, more efficient, and more profitable. Some of these include:

- The acquisition of Canam Aerospace and Cargo Net Innovations. This expands our portfolio of long line cargo hooks, bag automated transporters, primary hooks, carousels, long line nubbins, swivels, shock absorbers, logging grapples, synthetic long lines, and cargo nets for a variety of helicopter models.
- Agreements to distribute a range of new products from AKV Inc., Red Barn Machine, and Spectrolab. Their respective products include turbine engine cycle counters, standard and custom tools for engine overhaul and repair, and searchlights, including the popular Nightsun® series.
- Agreements to distribute special ops equipment and ground support dollies for Tyler and Mainline.
- Establishment of a new warehouse/distribution center for helicopter accessories in Hong Kong.

This year's catalog includes more than 2,500 individual parts and accessories for your helicopters. That's a growth of more than 1,000 products since our last catalog was issued. As you review the product listings for your helicopter model, please note the special designations for MME or "Maintenance Made Easy" products. These accessories will streamline your maintenance efforts, so they are definitely worth a look.

What's ahead for 2009? More of the same. Great products. Great Service. Strategic Growth. All focused on you and your operational requirements.

My team and I appreciate your business and your support.



DART Helicopter Services, LLC

P.O. Box 430, Piney Flats, TN 37686

Sales Office

352 Main Street West

Suite 103

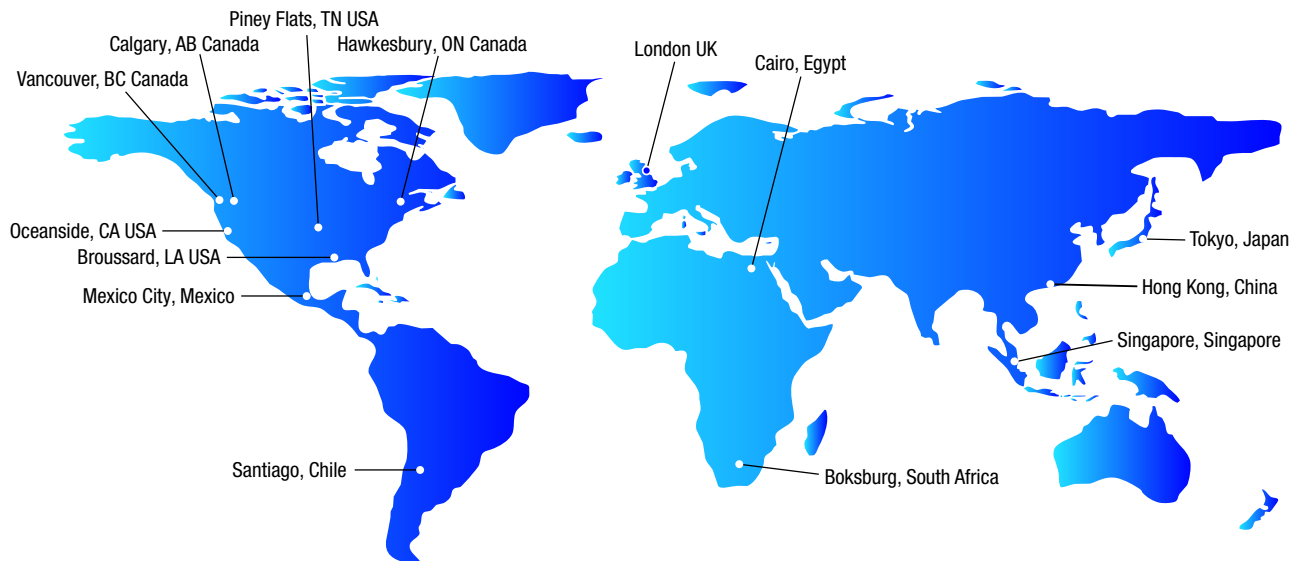
Hawkesbury, ON K6A 2H8

1-800-556-4166 or 1-613-632-3336

Fax: 1-613-632-4443

Email: sales@darthelicopterservices.com

LOCATIONS



OUR TEAM HAS OVER 150 YEARS OF INDUSTRY EXPERIENCE



Peggy McDonald
Director of
World Wide Sales



Tham Wei Min
South East Asia
Sales Representative



Roberto Sieveking
Latin America
Sales Representative



Heather Mahon
North America
Sales Manager



Robbin Fraser
International
Sales Associate



Jennifer Renwick
Marketing Coordinator



Sam Summers
New Business Liaison



Lucie Gaumond-Lamoureux
Sales Associate



Shirley Hay
Sales Associate



Carole O'Rourke
Sales Associate



Carrie Pearson
Sales Associate



Holly Menard
Marketing Coordinator



Steve Joseph
President of
Geneva Aviation



Steve Cudnofsky
Geneva Aviation
Tech Support



Dan Stow
DART Aerospace
Tech Support



Lisa Mansfield
Apical Industries
Tech Support



Jean Kerr
Sales Support



Linda Pilon
Marketing Support

MD HELICOPTERS

Tooling

MD 500 Engine Lift and XMSN Arm.....347

MD Tools.....348

Tri-Roller Staking Tools.....355

369/MD 500

Flotation Equipment359

Fast Rope.....362

Platform363

Bearpaws.....365

Windows366

Cargo Mirrors.....367

Aircraft Disabling Kit367

MME - Inlet Barrier Filters368

MD 600N

Flotation Equipment369

Bearpaws.....370

Aircraft Disabling Kit370

MD 900

Flotation Equipment371

Bearpaws.....372

Windows373

MME - Inlet Barrier Filters374



MD HELICOPTERS

New and featured accessories for MD Helicopters

- Utility Floats
- Cylindrical Emergency Floats
- Inlet Barrier Filters for MD 500 & 900
- Tooling



For more information or to place an order, contact:
DART Helicopter Services at 1-800-556-4166 or 1-613-632-3336 or visit:
www.DARThelicopterservices.com

TOOLING

Standard and custom tools for engine overhaul and aircraft maintenance for MD Helicopters



See our Tools for Rolls Royce 250 series engines in our new Engine Support Equipment section starting on page 31.



For more information or to place an order, contact:
DART Helicopter Services at 1-800-556-4166 or 1-613-632-3336 or visit:
www.DARThelicopterservices.com

MD500 Engine Lift and XMSN Arm

The MD 500 engine removal and install tool is versatile and comes complete with transmission adapter. Wheels allow for easy and safe movement through your workspace. Breakdown of lift makes storage or shipping easy.

- **Sturdy, tested to 500 lbs**
- **Quick and easy assembly and disassembly**
- **Caster wheels with brakes**



MD 500 LIFT AND XMSN ARM				
Part Number	Product Description	Special Comments	Aircraft Model	Price (USD)
RBT18625	MD 500 Lift and XMSN Arm		MD500	\$3,306

Tooling

MD Tools

M/R Swashplate Regrease Tool

The RBT18601 regrease tool separates into two pieces allowing you to grease the M/R swashplate without removing the rotor head.

- No removal of rotor head needed



RBT18601

T/R Swashplate Bearing Regrease Tool with Plug

- No leak plug saves grease and allows for complete lubing of bearing
- Allows you to regrease without total disassembly of swashplate bearings



RBT18604



RBT18605

M/R Hub Tapered Bearing Tool Set



RBT67828

MD TOOLS				
Part Number	Product Description	Special Comments	Aircraft Model	Price (USD)
RBT18601	M/R Swashplate Regrease Tool	Allows regreasing without removal of rotor head.	MD500D/E/F	\$472
RBT18604	T/R Swashplate Bearing Regrease Tool with Plug		MD500D/E/F	\$276
RBT18605	T/R Swashplate Bearing Regrease Tool with Plug		MD500 C Model	\$276
RBT67828	M/R Hub Tapered Bearing Tool Set		MD500D/E/F	\$459

MD Tools

T/R Feathering Bearing Removal Tool



RBT18603

T/R Blade Bushing Removal Tool

The RBT18635 allows you to safely remove the T/R blade bushings.



RBT18635

M/R Control Rigging Fixture



RBT18608

T/R Input Shaft Seal Guide



RBT18606

M/R Damper Compression Check Tool

The RBT18520 is a complete kit with dial indicator, bracket and calibrated weight to check your M/R dampers.

- **Compact kit in convenient carry case**



RBT18520

MD TOOLS				
Part Number	Product Description	Special Comments	Aircraft Model	Price (USD)
RBT18603	T/R Feathering Bearing Tool		MD500	\$412
RBA1710-30101-2	T/R Feathering Bearing Install Tool	Used on the -3/-5 bearing	MD500	\$262
RBA1710-3010-2B	T/R Feathering Bearing Install Tool	Used on the -7/9/17 & -19 bearing	MD500	\$262
RBT18635	T/R Blade Bushing Removal Tool		MD500D/E/F	\$365
RBT18608	M/R Control Rigging Fixture		MD500 D Model	\$294
RBT18606	T/R Input Shaft Seal Guide		MD500D/E/F	\$127
RBT18520	M/R Damper Compression Check Tool		MD500	\$853

Tooling

MD Tools

Landing Gear Bearing Install/Removal Tool



RBT18632

Overrunning Clutch Wrench

Remove overrunning clutch housing from shaft.

- Allow removal and installation with torquing at install



RBT18618

Sprag Clutch Test Fixture



RBT18612

Cyclic Grip Modification Tool



RBT28477-1

M/R Swashplate Bearing Removal Stationary C Model



RBT18511

MD TOOLS				
Part Number	Product Description	Special Comments	Aircraft Model	Price (USD)
RBT18632	Landing Gear Bearing Install/Removal Tool		MD500	\$587
RBT18618	Overrunning Clutch Wrench		MD500 C/D Models	\$334
RBT18612	Sprag Clutch Test Fixture		MD500	\$649
RBT28477-1	Cyclic Grip Modification Tool		MD500	\$1,536
RBT18511	M/R Swashplate Bearing Removal Stationary C Model		MD500 C Model	\$207

MD NOTAR Tools

Coupling Holding Wrench



RBT18900

Inner Bearing Retainer Tool



RBT18901

Fan Bearing Regreasing Tool



RBT18902

MD NOTAR TOOLS				
Part Number	Product Description	Special Comments	Aircraft Model	Price (USD)
RBT18900	Coupling Holding Wrench		MD NOTAR	\$297
RBT18901	Inner Bearing Retainer Tool		MD NOTAR	\$182
RBT18902	Fan Bearing Regreasing Tool		MD NOTAR	\$283

Tooling

MD Tools

MD TOOLS		
Part Number	Product Description	Price (USD)
RB0006-401-00736	MAIN TRANS. BACKLASH & RUNOUT INSP. FIXTURES	\$4,246
RB0006-806-00666-8	XMSN & RTR HUB ASSY. & DISASSY. TOOL	\$774
RB0006-806-00674	BEARING SEPARATOR 369D25418 T BEARING	\$910
RB0006-806-00675	BEARING REMOVER (369D25419) OR (369D25420)	\$947
RB0006-809-00088	T/R PITCH CONTROL STAKING TOOL "C & D" MODEL	\$3,196
RB0006-809-00090-1	ARBOR PRESS FOR 269A5050-75 & 369A7951-5 BRG.	\$1,172
RB0006-809-00090-15	STAKING TOOL FOR 269A5050-75 & 369A7951-5 BRG.	\$1,077
RB0006-809-00090-20	STAKING TOOL FOR 369A7951-15 & C5050-61 BRG	\$1,077
RB0006-809-00090-8	ARBOR PRESS FOR 369A7951-15 & C5050-61 BRG	\$1,176
RB0006-809-00650	BARREL WRENCH, SHERLOCK NUT	\$493
RB0006-809-00653	SPRING EXPANDER-SPRING T/R PEDAL BUNGEE	\$1,409
RB0006-809-00671	ARBOR PRESS FIXTURE T/R GEARBOX HOUSING	\$3,699
RB0006-809-00682	ASSEM. & DISASSEM. FIXTURE GEARBOX BEVEL PINION	\$1,782
RB0006-809-00698	OUTER RACE BEARING RETRAC. & ASSEM TOOLS	\$1,180
RB0006-809-00751	OIL NOZZLE WRENCH	\$135
RB0006-809-00759	BARREL WRENCH FOR NUT SL61N-7F	\$385
RB0006-809-00759-6F	BARREL WRENCH FOR NUT SL61N-6F	\$301
RB0006-814-00660	ROLLER BEARING OUTER RACE PULLER	\$1,407
RB0006-814-00661	OIL NOZZLE EXTENSION WRENCHES (2)	\$314
RBA1600-80902	BUSHING WRENCH T/R HINGE BOLT SAME AS: 269T9319	\$143
RBA1710-30101-2	T/R FEATHERING BEARING INSTALL TOOL (2 BLADE) -3/5	\$262
RBA1710-30101-2B	T/R FEATHERING BEARING INSTALL TOOL (2 BLD) -7/-9/-17/-19	\$262
RBA1710-30101-4	T/R FEATHERING BEARING INSTALL TOOL (4 BLADE)	\$262
RBA5000-40101	ENGINE TO TRANS ALIGNMENT TOOL	\$1,067
RBA5107-3	HOLDING FIXTURE INPUT GEAR "C" MODEL M/R	\$562
RBA5109-17	HOLDING FIXTURE OUTPUT GEAR "C" MODEL M/R	\$609
RBA5111-18	HOLDING FIXTURE OUTPUT GEAR "C" MODEL T/R	\$516
RBA6300-80906	WRENCH ADAPTER, LANDING GEAR DAMPER	\$214
RBA8100-80902	WRENCH FUEL CELL ASSEMBLY SET	\$1,154
RBA9015	BEARING RETRACTOR (OTR RACE-M/R OUTPUT "C" MODEL)	\$1,277
RBA9016	BEARING RETRACTOR	\$498
RBA9017	BEARING RETRACTOR	\$498
RBA9232	PLUG 269A5050-18 BEARING REMOVER	\$142
RBA9822-3 & -5	T/R S/P HLDG BLK (-3), WR (-5) SET "C" MODEL	\$580
RBA9822-3	BLOCK ONLY	\$229
RBA9822-5	WRENCH ONLY	\$349
RBA9826	WRENCH, STUD NUT	\$127
RBA9829	MAIN ROTOR MAST NUT WRENCH (MD DESIGN)	\$758
RBA9829-A	MAIN ROTOR MAST NUT WRENCH (RB DESIGN)	\$493
RBA9904-501	HOIST ADAPTER "C" MODEL	\$1,627
RBA9917	SEAL SIZING TOOL	\$203
RBA9928-5	FIXTURE	\$771
RBA9928-9	RIGGING FIXTURE 4 "D" MODEL LH COMMAND	\$771
RBA9929-5	R/H FIXTURE RIGGING	\$550
RBA9930	RIGGING PLATE, MIXER	\$385
RBA9932	M/R PULLER (2 JAW) "C" MODEL, 7075 AL	\$1,030
RBA9933-5	MAIN ROTOR HUB DRIVER ASSEMBLY (COMPLETE)	\$581
RBA9936	COLLECTIVE BUNGEE	\$202
RBA9937-5	T/R NUT WRENCH "C" MODEL (RB DESIGN)	\$103
RBA9957	M/R DRIVESHAFT TORQUE ADAPTER	\$45
RBA9960	BARREL WRENCH	\$324
RBA9961	BARREL WRENCH, M/R TRANSMISSION "C" MODEL	\$324
RBA9962	T/R BEARING EXTRACTOR "C" MODEL	\$874
RBA9963	BARREL WRENCH	\$324
RBA9965	ARBOR, SPLINE	\$521
RBA9966	BARREL WRENCH SET T-HANDLE (2 PIECE)	\$1,030
RBA9967	PULLER, BEARING "C" MODEL	\$751
RBA9970	SWAGING SET	\$466
RBA9983	TORQUE ADAPTER	\$53
RBA9990	PULLER, BEARING OUTPUT SHAFT	\$539

MD Tools

MD TOOLS		
Part Number	Product Description	Price (USD)
RBA9991	PULLER, BEARING INPUT SHAFT (PLATE ONLY)	\$447
RBD23601-80910	HORIZONTAL STABILIZER ASSEMBLY GAUGE	\$630
RBD25121-30201	HOLDING FIXTURE INPUT GEAR	\$562
RBD25125-30201	HOLDING FIXTURE OUTPUT GEAR	\$609
RBD25430-30201	HOLDING FIXTURE GEAR SHAFT BEV/PIN OUTPUT T/R	\$516
RBD25148-80901	OUTPUT SHAFT BRG. REMOVAL TOOL (PLATE ONLY)	\$672
RBD26300-80901	L/G DAMPER OVERHAUL CHARGING TOOL COMPLETE (NEW)	\$1,008
RBD29822-3 & -5	T/R SWASH PLATE HOLDING BLOCK (-3), WRENCH (-5) SET 2 & 4 BLADE "D,E&F" MODEL	\$627
RBD29822-3	TAIL ROTOR CROSS HEAD HOLDING BLOCK	\$273
RBD29822-5	WRENCH ONLY	\$366
RBD29823-5	T/R NUT WRENCH "D" MODEL (OLD DESIGN)	\$129
RBD29823-5A	T/R NUT WRENCH "D" MODEL (NEW DESIGN)	\$227
RBD29826	4 BLD T/R NUT #369D21716-5 TORQUE WRENCH ADPT.	\$156
RBD29828	ELASTOMERIC BEARING REMOVAL TOOL	\$383
RBD29904	HOIST ADAPTER "D" MODEL	\$2,455
RBD29905	ENGINE HOIST ROPE PULLEY SYSTEM (SEE RBT18625 ON PAGE 347)	\$580
RBD29906	OUTER RACE BEARING PULLER	\$972
RBD29910-32501	TEST FIXTURE, RIGGING	\$1,272
RBD29919-501	PHASING TOOL, M/R (STRING TYPE)	\$481
RBD29929-5	LONG RIGGING FIXTURE	\$771
RBD29929-9	RIGGING TOOL LONG - "D" MODEL LH COMMAND	\$771
RBD29931	T/R RIGGING TOOL	\$98
RBD29932	M/R PULLER "D" MODEL (3 JAW)	\$1,556
RBD29936	T/R BUNGEE TOOL	\$202
RBD29936-4BL	T/R BUNGEE TOOL 4 BLADE	\$273
RBD29938	LANDING GEAR DAMPER SEAL TOOL	\$104
RBD29983	TORQUE WRENCH, TAIL BOOM	\$63
RBD29985	BUNGEE SPRING COMP. TOOL ROD & CHANNEL	\$630
RB5450-501-1	F MODEL CLUTCH REMOVAL TOOL-NEW DESIGN	\$211
RBH5610-705-40101	INSP FIX FAN ASSY TRANS COUP	\$1,920
RBH6340-80901	HOUSING SPANNER WRENCH	\$207
RBH9925	RIGGING FIXTURE	\$125
RBH9926	MAIN TRANS BRG INNER RACE ASSY. TOOL "C" MODEL	\$459
RBH9927	BEARING INSTALLATION TOOL "C" MODEL	\$372
RBH9928	TAB BENDER WITH PLASTIC BLOCK	\$344
RBH9928-12	TAB BENDER 12" LONG WITH PLASTIC BLOCK	\$383
RBH9928-101	DIAL INDICATOR TRIM TAB TOOL	\$1,677
RB877528-4	PITCHLINK BRG. CUTTER FOR BRG. #369A7951-57	\$909
RB877528-5	DAMPER BRG. CUTTER FOR BRG. #369A7951-15 & C5050-61	\$1,007
RB877900-6	M/R SWASHPLT DRIVE LINK BEARING FLANGE CUTTER	\$275
RBT28477-1	CYCLIC GRIP MODIFICATION TOOL	\$1,536
RBT67828	M/R HUB TAPERED BRG. TOOL SET	\$459
RBWSI-HT-12AS	TAILBOOM GROMMET INSTALLATION TOOL	\$230

Tooling

MD Tools

MD 600 TOOLS		
Part Number	Product Description	Price (USD)
RB600N1002	VERTICAL TAB BENDING TOOL	\$275
RB600N6051-1-CF1	CLAMPING FIXTURE	\$113
RB600N6051-1-ATP1	SIZING TOOL	\$130
RB600N6052-1-ATP1	PISTON WRENCH	\$86
RB600N6052-1-ATP2	EXTENSION CAP	\$420
RB600N6053-1-ATP1	TORQUE WRENCH ADAPTER	\$490
RB600N6054-1-ATP1	TORQUE WRENCH ADAPTER	\$444
RB600N9904-1	HOISTING ADAPTER	\$2,455
RB600N9929-5	LONGITUDNAL CYCLIC RIGGING FIXTURE	\$771
RB600N9932-501	HUB PULLER	\$2,890
RBA7300-507-ATP1	BUNGEE COMPRESSION TOOL	\$793
RBA9928-19	RIG FIXT, LAT CYCLIC	\$713
MD 900 TOOLS		
Part Number	Product Description	Price (USD)
RB900G1010006	ENGINE CONTROL RIG PINS (SET OF 10)	\$339
RB900G1150001	MRB TAB BENDING TOOLS	Contact Sales
RB900G14000101-10	HEADSLING	\$738
RB900G23000102-1	JACK PADS (2 PCS.)	\$156
RB900G2341100	VERTICAL END PLATE RIG PIN	\$225
RB900G3441005-1	ANTI TORQUE SHAFT GREASE TOOL (USE TOOL RBT18902)	\$283
RB900G8920120-10	GUIDE PINS (2 PCS.)	\$133
RB900G8920125-1	JACK SCREWS (2 PCS.)	\$293
RB900G8930001	ENGINE CONTROL RIG PIN	\$51
RBAFTI-900P7661	FUEL CELL ROD (4 PCS.)	\$115
RB GT2-900R74410	ANTI TORQUE SHAFT SOCKET	\$364
RB GTI-90007441000	OIL COOLER DRIVE SHAFT NUT TORQUE SOCKET	\$310
RB T907	UPPER BEARING REMOVAL TOOL	\$122
RB T909	UPPER SEAL INSTALLATION TOOL	\$429
RB T910	LOWER BEARING/LINEAR TOOL	\$297
RB T911	LOWER BRG. OUTER RACE INSTALLATION TOOL	\$428
NOTAR TOOLS		
Part Number	Product Description	Price (USD)
RB500N9505-1M	NOTAR DRIVESHAFT COUPLING SOCKET (MODIFIED)	\$320
RB500N9506-1M	NOTAR FAN NUT SOCKET (MODIFIED)	\$332
RB500N9901-3	RIGGING PIN ASSY	\$57

Tri-Roller Staking Tools

These tools use 3 rollers to stake the bearing with a superior finish. No more scuffing or tearing of the bearing lip and staking bearings is easier than ever. This tool line includes drill press swaging tools, install and removal aides, bearing cutters and portable systems used on aircraft. All portable units allow bearing replacement on aircraft in just a matter of minutes. These staking and cutting tools can be made for most bearings on almost any helicopter, let us know if there is one we can make for you!

*Other
Tri-Roller
Staking Tools
available.
Contact sales*



- **More stable than 2 roller design**
- **Portable designs allow for in situation removal and replacement without the use of power tools**

TRI-ROLLER STAKING TOOLS

Part Number	Product Description	Special Comments	Bearing Number	Price (USD)
RBST1000	Drill Press Tri Roller		MS14101-3	\$1,087
RBST1001	Drill Press Tri Roller		MS14103-3	\$1,087
RBST1002	Drill Press Tri Roller	Also 214-011-811-103, 222-312-751-1, ALK4-128-101 and TGA103A bearings	MS14103-4	\$1,087
RBST1003	Drill Press Tri Roller	Also 205-001-048-1 & 209-001-051-1 bearings	MS14101-4	\$1,087
RBST1004	Drill Press Tri Roller		MS14103-5	\$1,087
RBST1005	Drill Press Tri Roller		MS14101-5	\$1,185
RBST1006	Drill Press Tri Roller	Also MS14101-6 bearing	MS14103-6	\$1,185
RBST1007	Drill Press Tri Roller	Also MS14103-7A, P213230 & VTB03490	MS14101-7	\$1,087
RBST1008	Drill Press Tri Roller	Also 206-031-594 bearing	MS14103-7	\$1,087
RBST1009	Drill Press Tri Roller	Also P21340 & VTB03500 Bearing	MS14101-8	\$1,087
RBST1010	Drill Press Tri Roller		MS14103-8	\$1,087
RBST1011	Drill Press Tri Roller		MS14101-9	\$1,087
RBST1012	Drill Press Tri Roller		MS14103-9	\$1,087
RBST1013	Drill Press Tri Roller		MS14101-10	\$1,087
RBST1014	Drill Press Tri Roller		MS14103-10	\$1,087
RBST1015	Drill Press Tri Roller		MS14103-12	\$1,087
RBST1016	Drill Press Tri Roller	Also 206-031-590 & 209-031-351-1 Bearings	MS14101-12	\$1,087
RBST1017	Drill Press Tri Roller		MS14101-14	\$1,087
RBST1018	Drill Press Tri Roller		MS14103-14	\$1,087
RBST1019	Drill Press Tri Roller		MS14101-16	\$1,087
RBST1020	Drill Press Tri Roller		MS14103-16	\$1,087
RBST1034	Drill Press Tri Roller	Also 206-033-509-3, 222-330-619-101 & 222-330-625-1 bearings	206-033-509-003	\$1,085
RBST2014	Drill Press Tri Roller		214-010-711-1	\$1,085
RBST2015	Drill Press Tri Roller		214-010-710-1	\$1,085
RBST2017	Drill Press Tri Roller		214-010-712-11	\$1,085
RBST2058	Drill Press Tri Roller		222-312-752-1	\$1,085
RBST2059	Drill Press Tri Roller	Also 222-312-750-1 bearing	222-312-702-105	\$1,185
RBST2071	Drill Press Tri Roller		222-310-461-1	\$1,185
RBST2087	Drill Press Tri Roller		222-312-753-101	\$1,185
RBST2089	Drill Press Tri Roller	Also 222-312-754-101 bearing	222-312-755-1	\$1,185
RBST2120	Drill Press Tri Roller		406-310-403-101	\$1,185
RBST2128	Drill Press Tri Roller		412-010-427-101	\$1,185
RBST2162	Drill Press Tri Roller		406-312-100-101	\$1,185
RBST2417	Drill Press Tri Roller		230-330-509-101	\$1,185
RBST3004	Drill Press Tri Roller		MS14103-5	\$1,185
RBST3007	Drill Press Tri Roller		MS14101-7	\$1,185
RBST3008	Portable Tri Roller	Also 206-031-594 & 206-031-591-1 & -3 bearings	MS14103-7	\$1,984
RBST3009	Portable Tri Roller		MS14101-8	Contact Sales
RBST3010	Portable Tri Roller		MS14103-8	Contact Sales
RBST3016	Portable Tri Roller		MS14101-12	Contact Sales

MD HELICOPTERS

NOTES

MD HELICOPTERS

New and featured accessories for MD Helicopters

- Utility Floats
- Cylindrical Emergency Floats
- Tyler Special Operations Platform
- Fast Rope Unit
- Inlet Barrier Filters for MD 500 & 900



For more information or to place an order, contact:
DART Helicopter Services at 1-800-556-4166 or 1-613-632-3336 or visit:
www.DARThelicopterservices.com

Cylindrical Emergency Float System



MD Helicopters MD 500 Emergency Float System is the only float system certified for take off after a water landing for the MD 500. This system is compatible with ground handling wheels and the float bags can be removed in a matter of minutes. The mechanical valve system has no squibs or electrical requirements. The cylinder valve assemblies and floats are available as exchange items, thereby reducing maintenance and down time. All float chambers come standard with field replaceable pressure relief and inflation valves. The float bags are on-condition and do not have to be returned to the factory for recertification. Factory recertification of the system is available for customers who desire OEM services. Annual inspection of float bags, as compared with six month inspection required in some competitors' products,

lowers on going maintenance costs of the system. The float system has one cylinder valve assembly as opposed to two on the OEM and is approximately 50 pounds lighter than the OEM supplied system.

Replacement:	N/A
Floats (Number/Design):	4 (2 Fwd, 2 Aft)/Cylindrical
Float Inflation Reservoirs (Qty./Type/Gas):	1/Composite Wound/Nitrogen (3050 psi @ 70°F)
Inflation Mechanism:	Mechanical with cyclic mounted lever
Liferafts Inflation Reservoirs:	N/A
Liferafts Inflation Mechanism:	N/A
Special Design Features:	Certified for take off after water landing. Utilizes skid extensions for Aft Float attachment
Aircraft Limitations:	Maximum altitude for float inflation is 3,000 ft. above water level.
Max. Airspeed of Inflation:	70 KIAS
Max. Airspeed Floats Inflated:	70 KIAS
Max. Towing Speed:	N/A
Maintenance / Overhaul:	Semi-Annual, annual & 3 yrs. inspect and test / 3 yrs. Reservoirs
Exchange Program:	Available for Floats & Reservoir Valve Assemblies.

MD 369/MD 500 CYLINDRICAL EMERGENCY FLOAT SYSTEM

Approval	STC Number	A/C Approved	STC Description	
USA	SR00932LA	MD369D/E/F/FF/HS/HE/HM/500N	Cylindrical Emergency Float System	
Canada	P-06-0265	MD369D/E/F/FF/HS/HE/HM/500N	Cylindrical Emergency Float System	
EASA	EASA.IM.R.S.01226	MD369D/E/F/FF/HS/HE/HM/500N	Cylindrical Emergency Float System	
New approvals are continually being added; if you do not see your required approval, contact your DART sales office to verify the status.				
Part Number	Product Description		Kit Weight	Installation Time
20491-1	Emergency Float System		124.00 lb / 56.2 kg	30 hrs
Part Number	Product Description	Special Comments	Aircraft Model	Price (USD)
20491-1	Emergency Float System	Kit includes 2 Fwd & 2 Aft cylindrical floats. Price is for complete float system	MD500 (369HS/HM/HE/D/E/F/FF) / MD500N	\$75,600

Flotation Equipment

Utility Floats



Each float consists of six separate air-holding chambers. The chambers are separated by bulkheads made of the same urethane nylon as the tube to minimize the loss of buoyancy in the event of puncture or tear. Each chamber contains a topping valve for manual inflation and a pressure relief valve (PRV) to prevent over-pressurization.

The float design provides for permanent inflation and full time buoyancy for helicopters assigned to off-shore or other over water activities. Abrasion-resistance chafing material located on the underside of each float and the reinforcement of the personnel walkways are incorporated to provide additional abrasion protection.

Replacement:	MD369H92020-1/-2 (369HS/HM/HE), MD369H92020-112 (369D/E) (HF500 only)
Floats (Number/Design):	2 (LH/RH)/Cylindrical
Float Inflation Reservoirs (Qty./Type/Gas):	N/A
Inflation Mechanism:	N/A
Installation Requirement:	Requires prior installation of MD P/N 369H92035-1/-2 (369HS/HM/HE) or MD P/N 369D290086-500 (369D/E) or Apical P/N 20411-1 Float Attachment Kit
Special Design Features:	Designed for quick installation and removal (20408 only)
Aircraft Limitations:	No change from OEM floats
Maintenance / Overhaul:	Semi-Annual, Annual & 3 yrs. inspect and test / N/A
Exchange Program:	Available for Floats.

MD 369 SLIP-ON UTILITY FLOATS

Approval	STC Number	A/C Approved	STC Description	
USA	SR00937LA	MD369HS/HM/HE/D/E/500C/D/E	OEM Style HF500 Utility Floats	
USA	SH5803NM	MD369HS/HM/HE/D/E/500C/D/E	Slip-on Utility Floats	
Canada	SH96-84	MD369HS/HM/HE/D/E/500C/D/E	Slip-on Utility Floats	
New approvals are continually being added; if you do not see your required approval, contact your DART sales office to verify the status.				
Part Number	Product Description		Kit Weight	Installation Time
20408-101	Slip-on Utility Float LH		57.00 lb / 25.91 kg	10 hrs
20408-102	Slip-on Utility Float RH		57.00 lb / 25.91 kg	10 hrs
20408-103	Slip-on Utility Float LH		57.00 lb / 25.91 kg	10 hrs
20408-104	Slip-on Utility Float RH		57.00 lb / 25.91 kg	10 hrs
HF500-101	Utility Float LH		57.00 lb / 25.91 kg	10 hrs
HF500-102	Utility Float RH		57.00 lb / 25.91 kg	10 hrs
HF500-103	Utility Float LH		57.00 lb / 25.91 kg	10 hrs
HF500-104	Utility Float RH		57.00 lb / 25.91 kg	10 hrs
Part Number	Product Description	Special Comments	Aircraft Model	Price (USD)
20408-101	Slip-on Utility Float LH	Floats are removable without removing landing gear (Apical design). Price is per float	MD500C (369HS/HM/HE)	\$9,398
20408-102	Slip-on Utility Float RH	Floats are removable without removing landing gear (Apical design). Price is per float	MD500C (369HS/HM/HE)	\$9,398
20408-103	Slip-on Utility Float LH	Floats are removable without removing landing gear (Apical design). Price is per float	MD500D/E (369D/E)	\$9,398
20408-104	Slip-on Utility Float RH	Floats are removable without removing landing gear (Apical design). Price is per float	MD500D/E (369D/E)	\$9,398
HF500-101	Utility Float LH	OEM style Price is per float	MD500C (369HS/HM/HE)	\$9,030
HF500-102	Utility Float RH	OEM style Price is per float	MD500C (369HS/HM/HE)	\$9,030
HF500-103	Utility Float LH	OEM style Price is per float	MD500D (369D/E)	\$9,030
HF500-104	Utility Float RH	OEM style Price is per float	MD500D (369D/E)	\$9,030
20411-1	Skid Extension	Fits LH or RH. Required for all p/n 20408 & HF500 float installation. Price is per side	MD500C/D/E (369HS/HM/HE/D/E)	\$5,145

Replacement Floats



These floats are designed as replacements for the MD floats provided with the OEM float system. The floats consist of six separate air-holding chambers. The chambers are separated by bulkheads made of the same urethane nylon as the float tube to minimize the loss of buoyancy in the event of a puncture tear. Each chamber contains an inlet check valve for inflation by the cylinder/valve assembly, topping valve to provide a means for manual inflation and PRV for pressure relief to prevent over-pressurization.

Replacement:	MD369H92036-1, 369H92036-2 (500C, 369HS/HM/HE), MD369D292473-1, 369D292473-2 (500D/E/N, 369D/E), MD369D292473-1, 369D292473-2
Floats (Number/Design):	2 (LH/RH)/Cylindrical
Float Inflation Reservoirs (Qty./Type/Gas):	N/A
Inflation Mechanism:	N/A
Installation Requirement:	Requires prior installation of MD P/N 369D290121-515, -517, -519 (369D), MD P/N 369D290121-527 (369E) MD P/N 369H90121-509 (369HS, HE, HM) or MD P/N 369D290121-531 (500N) Float Attachment Kit
Aircraft Limitations:	No change from OEM floats
Exchange Program:	Available for Floats.

MD 369/MD 500 REPLACEMENT FLOATS

Approval	STC Number	A/C Approved	STC Description	
USA	SH8041NM	MD369HS/HM/HE/D/E/500N	Replacement Floats	
Canada	SH96-87	MD369HS/HM/HE/D/E/500N	Replacement Floats	
New approvals are continually being added; if you do not see your required approval, contact your DART sales office to verify the status.				
Part Number	Product Description	Kit Weight	Installation Time	
HF369-101	Replacement Float LH	0.00 lb / 0.00 kg net weight increase over OEM	2 hrs	
HF369-102	Replacement Float RH	0.00 lb / 0.00 kg net weight increase over OEM	2 hrs	
HF369-103	Replacement Float LH	0.00 lb / 0.00 kg net weight increase over OEM	2 hrs	
HF369-104	Replacement Float RH	0.00 lb / 0.00 kg net weight increase over OEM	2 hrs	
20045.0000	Replacement Cylinder	0.00 lb / 0.00 kg net weight increase over OEM	1 hr	
Part Number	Product Description	Special Comments	Aircraft Model	Price (USD)
HF369-101	Replacement Float LH	Price is per float	MD369D/E/500N	\$13,388
HF369-102	Replacement Float RH	Price is per float	MD369D/E/500N	\$13,388
HF369-103	Replacement Float LH	Price is per float	MD369HS/HE/HM	\$13,388
HF369-104	Replacement Float RH	Price is per float	MD369HS/HE/HM	\$13,388
20045.0000	Replacement Cylinder	PMA Supplement No. 2, Tavco 2370039	MD369HS/HE/HM	\$4,253

Replacement Inflation Reservoirs (Cylinders)

REPLACEMENT INFLATION RESERVOIRS (CYLINDERS)

Part Number	Product Description	Kit Weight		Installation Time
20045.0000	Replacement Cylinder	0 lb / 0 kg net weight increase over OEM		1 hr
Part Number	Product Description	Special Comments	Aircraft Model	Price (USD)
20045.0000	Replacement Cylinder	PMA Supplement No. 2 Air Cruisers D17743-1	MD369D/E/500N	\$4,253

Fast Rope

MD Fast Rope Unit

Allows for crew deployment in situations where the helicopter is unable or unwilling to touch down. The Fast Rope Hook attaches to an extended, overhead framework that allows personnel to safely & easily deploy from the helicopter. The hook is designed with a cable release to jettison the ropes once personnel are on the ground. This provides a “safe & clean” departure for the helicopter (no ropes attached). The Fast Rope Hook is released from inside the helicopter by a two-function T-handle cable release. The hook; (approved for 415 lbs per side) is specifically designed for fast-rope operations. After initial set up, the Fast Rope unit can be quickly installed & uninstalled on the helicopter in under 10 min. The entire system is designed to be user-friendly, no tools required, ideal for emergency response.

Optional:

- 1) Can be installed in conjunction with the Tyler Special Operations Platform (TSOP).
- 2) Lightweight Rope: In coordination with a leading rope manufacturer, Tyler has developed a new lightweight Fast Rope that has a 32% weight reduction over standard ropes.



- Hook position is extended overhead allowing personnel to safely & easily deploy from the helicopter
- Two-step T-handle cable release, from inside helicopter
- Ability to jettison rope makes departures safer for personnel

Hooks available for larger aircraft see page 7

MD FAST ROPE UNIT				
Approval	STC Number	A/C Approved	STC Description	
USA	SR02067LA	369D/E/F/FF/ 500N	External attach frame/let down unit	
New approvals are continually being added; if you do not see your required approval, contact your DART sales office to verify the status.				
Part Number	Product Description		Kit Weight	Installation Time
MD FAST ROPE	External attach frame/let down unit		25 lbs	Under 5 min. after initial install of 16 hrs
Part Number	Product Description	Special Comments	Aircraft Model	Price (USD)
MD FAST ROPE	External attach frame/let down unit	Used Worldwide	369D/E/F/FF/ 500N	\$19,550

NEW!

Tyler Special Operations Platform (TSOP)

Used by government agencies, law enforcement & military worldwide. TSOP assists SWAT and rescue crews with rooftop evacuations, search/rescue missions, dive team deployment and improves field of view for marksmen. No tools required, no modification to ship. Installs in under 10 minutes. Platforms are designed with ergonomic folding footrest & attach points for securing personnel wearing safety gear.

Optional:

- 1) Self-retracting twist release seat belts specially designed for the TSOP.
- 2) Fast Rope and Rappel System for MDHI helicopters.



NEW!

- **Optional Fast-Rope and Rappel Unit**
- **Benches are powder coated black**
- **No modification to ship**

TYLER SPECIAL OPERATION PLATFORM (TSOP)

Approval	STC Number	A/C Approved	STC Description	
USA	SR01682LA	369/A/D/E/F/FF/H/HE/HM/HS/ 500N	Cargo Rack Approved to Carry Crew Members	
Canada	C-07-0681	369/A/D/E/F/FF/H/HE/HM/HS/ 500N	Cargo Rack Approved to Carry Crew Members	
New approvals are continually being added; if you do not see your required approval, contact your DART sales office to verify the status.				
Part Number	Product Description		Kit Weight	Installation Time
TSOP MD-500	Externally Mounted Benches for SWAT Teams & Crew		130 lbs 2 Benches & main support frame	Two Persons Under 5 minutes
Part Number	Product Description	Special Comments	Aircraft Model	Price (USD)
TSOP MD-500	Externally Mounted Benches for SWAT Teams & Crew	Used Worldwide Set includes LH and RH	MDHI (Hughes)	\$33,925

Platform

Power Bench

Tyler has modified its Special Operations Platform (TSOP) for the special needs of power companies. By lowering and extending our standard support frame, linemen can now perform maintenance from a working platform independent of the ships landing gear. The Power Bench can be installed in 30 minutes with no modifications to the helicopter. The support framework is constructed of 4130 Chrome Molly Steel and the benches of 6061-T6 aluminum. Both right and left side benches can be ordered or just one bench accompanied by a counter balance boom & weight box mounted on the opposing side. The Power Bench has been EPRI High Voltage Tested and IBEW Approved. Tyler Power Benches are made to fit the customers particular needs. Please allow 10 weeks for delivery. System weight will vary depending on customers design requirements.

- Safe working platform
- Benches are powder coated black
- No modification to ship



POWER BENCH					
Approval	STC Number	A/C Approved		STC Description	
USA	SR01682LA	369/A/D/E/F/FF/H/HE/HM/HS/ 500N		Cargo Rack Approved to Carry Crew Members	
Canada	C-07-0681	369/A/D/E/F/FF/H/HE/HM/HS/ 500N		Cargo Rack Approved to Carry Crew Members	
New approvals are continually being added; if you do not see your required approval, contact your DART sales office to verify the status.					
Part Number	Product Description		Kit Weight	Installation Time	
Power Bench MD TSOP	Externally Mounted Platform/Benches for Line Maintenance Crews		Varies depending on configuration	Two Persons Under 5 minutes	
Part Number	Product Description	Special Comments		Aircraft Model	Price (USD)
Power Bench MD TSOP	Externally Mounted Platform/Benches for Line Maintenance Crews	Used Worldwide		MDHI (Hughes)	Contact Sales



Bearpaws

Secure Landings

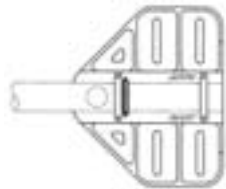
For as long as helicopters have been in operation, soft terrain landings have created problems for pilots. Without Bearpaws, you may have experienced balancing problems when landing or taking off in soft terrain such as tundra, snow, or sand.

DART Bearpaws are constructed of a high density polymer, not plywood, aluminum or composite. This polymer resists cracking, chipping and breaking. The one-piece machined construction ensures consistent and deliberate load transfer. The material is also flexible, so it can deflect under high-point contact loads when landing on rocks or roots, and DART Bearpaws have an inherent memory so they return to their original shape upon take off.

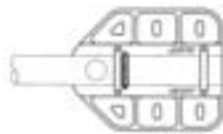
Why purchase DART bearpaws?

- **Lightweight**
- **Easy to install**
- **High strength polymer with memory, deflects under critical point loading without failure and returns to original shape when unloaded**

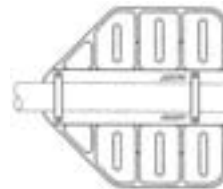
BEARPAWS				
Approval	STC Number	A/C Approved	STC Description	
Canada	SH90-17	MD369/A/D/E/F/FF/H/HE/HM/HS/ MD500N	UHMW Polymer Bearpaw	
USA	SH849NE	MD369/A/D/E/F/FF/H/HE/HM/HS/ MD500N	UHMW Polymer Bearpaw	
Austria	ACG.21NE2.104	MD369D/E/F/FF/MD500N	UHMW Polymer Bearpaw	
New approvals are continually being added; if you do not see your required approval, contact your DART sales office to verify the status.				
Part Number	Product Description		Kit Weight	Installation Time
D500-572-011	Bearpaw Kit MD500		8.50 lb / 3.86 kg	2 hrs
D500-572-021	Bearpaw Kit (Narrow) MD500		7.50 lb / 3.41 kg	2 hrs
D500-572-013	Bearpaw Kit MD500N		11.40 lb / 5.17 kg	2 hrs
Part Number	Product Description	Special Comments	Aircraft Model	Price (USD)
D500-572-011	Bearpaw Kit	For soft or uneven terrain landings. 19" wide footprint. Price is per aircraft	MD500 (MD369/A/H/HM/ HS/HE/D/E/F/FF)	\$2,015
D500-572-021	Bearpaw Kit (Narrow)	Designed for tundra landings. 13" wide footprint. Price is per aircraft	MD500 (MD369/A/H/HM/ HS/HE/D/E/F/FF)	\$2,015
D500-572-013	Bearpaw Kit	For soft or uneven terrain landings. Price is per aircraft	MD500N	\$2,460



D500-572-011



D500-572-021



D500-572-013

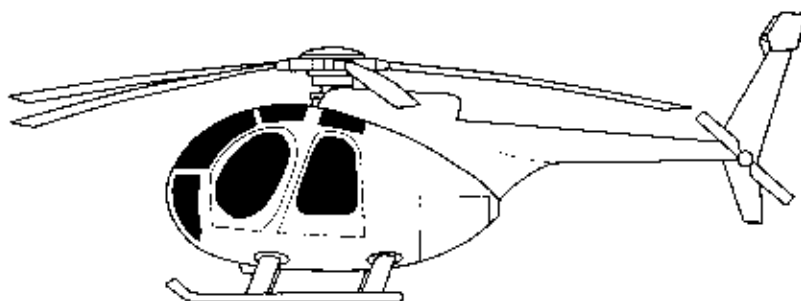
Windows

Crew Door Windows, Passenger Windows, Canopies, Windshields

MD 369/500 CREW DOOR WINDOWS				
Part Number	Product Description	O.E.M. Part Number	Price (USD)	PMA Number
369-400-1	L/H Crew Door Window	369H2024-51/-71	\$596	PQ0327SW
369-400-2	R/H Crew Door Window	369H2024-52/-72	\$596	PQ0327SW
369-401-1	L/H Rubber Mount Crew	369H2024-51/71	\$757	PQ0327SW
369-401-2	R/H Rubber Mount Crew	369H2024-52/72	\$757	PQ0327SW
369-500-1	L/H Crew With Slide	369H2024-51/71	\$949	PQ0327SW
369-500-2	R/H Crew With Slide	369H2024-52/72	\$949	PQ0327SW
MD 369/500 PASSENGER WINDOWS				
Part Number	Product Description	O.E.M. Part Number	Price (USD)	PMA Number
369-400-3	L/H Passenger Door Window	369H2040-51	\$596	PQ0327SW
369-400-4	R/H Passenger Door Window	369H2040-52	\$596	PQ0327SW
369-401-3	L/H Rubber Mount Passenger	369H2040-51	\$757	PQ0327SW
369-401-4	R/H Rubber Mount Passenger	369H2040-52	\$757	PQ0327SW
369-500-3	L/H Passenger with Slide	369H2040-51	\$949	PQ0327SW
369-500-4	R/H Passenger with Slide	369H2040-52	\$949	PQ0327SW
MD 369/500 CANOPIES				
Part Number	Product Description	O.E.M. Part Number	Price (USD)	PMA Number
369-100-1	L/H Canopy Fwd	369H2410-901	\$693	PQ0327SW
369-100-2	R/H Canopy Fwd	369H2410-902	\$693	PQ0327SW
369-100-3	L/H Canopy Aft	369H3019-1	\$569	PQ0327SW
369-100-4	L/H Canopy Aft	369H3019-2	\$569	PQ0327SW
MD 369/500 WINDSHIELDS				
Part Number	Product Description	O.E.M. Part Number	Price (USD)	PMA Number
369-200-5	L/H Lower Windshield	369A2403-505/369H2419-1	\$1,245	PQ0327SW
369-200-6	R/H Lower Windshield	369A2403-506/369H2419-2	\$1,245	PQ0327SW
369-300-5	L/H Center Windshield	369H2418-11/369A2404-xxx	\$1,191	PQ0327SW
369-300-6	R/H Center Windshield	369H2418-2/369A2404-xxx	\$1,191	PQ0327SW
PLASTIC CLEANER				
Part Number	Product Description	Special Comments	Aircraft Model	Price (USD)
FP006	NORDAM 210 Cleaner	Price is per 14 fl. Oz. Bottle. Sold in cases of 12 bottles.	ALL	Contact Sales

*Green color indicates rubber mount

Does not include hardware. Replacement window only.



Cargo Mirrors

The DART MD 500 Cargo Mirror Assembly mounts to the front end of the left-hand skidtube and provides a clear view of the cargo hook for accurate and safe hookup and release of external loads.



CARGO MIRROR INSTALLATION

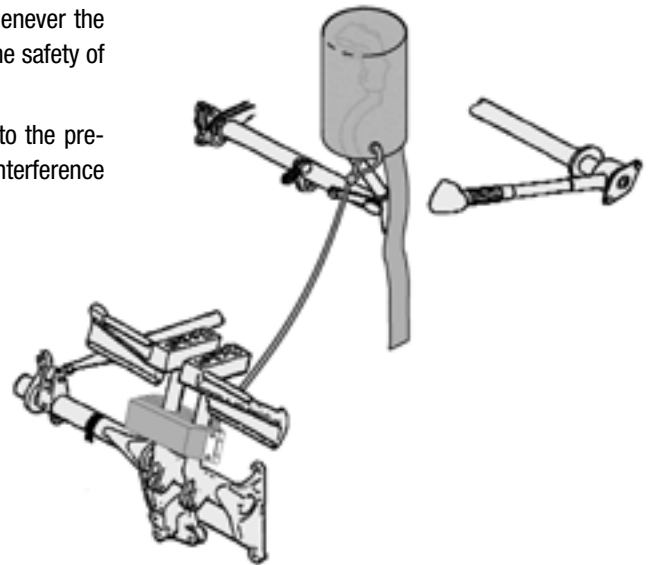
Approval	STC Number	A/C Approved	STC Description		
Canada	SH90-17	MD500 (MD369/A/D/E/F/FF/H/HE/HM/HS)/500N	Cargo Mirror Installation		
USA	SH849NE	MD500 (MD369/A/D/E/F/FF/H/HE/HM/HS)/500N	Cargo Mirror Installation		
New approvals are continually being added; if you do not see your required approval, contact your DART sales office to verify the status.					
Part Number	Product Description	Kit Weight		Installation Time	
D500-560-041	Cargo Mirror Installation	1.0 lb / 0.45 kg		1 hr	
Part Number	Product Description	Special Comments		Aircraft Model	Price (USD)
D500-560-041	Cargo Mirror Installation	Provides view of cargo hook, 6" convex mirror, installs on Fwd end of LH skidtube		MD500 / 500N	\$746

Aircraft Disabling Kit

The Disabling Kit can be used to physically secure and disable the aircraft whenever the aircraft is unattended. This method of securing the aircraft was developed for the safety of personnel and the environment.

Methods of removing this disabling and locking device can be incorporated into the pre-flight checklist to prevent accidental damage to the aircraft and inadvertent interference with in-flight operations.

- No Aircraft modifications required



AIRCRAFT DISABLING KIT

Part Number	Product Description	Special Comments	Aircraft Model	Price (USD)
D500-745-011	Aircraft Disabling Device Kit	Kit consists of one piece hinged tail rotor pedal immobilizer. May be used in conjunction with existing key locked power supply to ensure dual disabling. Price is per lock.	MD500 (MD369/A/D/E/F/FF/H/HE/HM/HS)/500N	\$924

Maintenance Made Easy

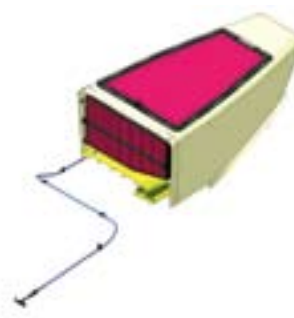
Inlet Barrier Filters - AFS

Product Description:

The optimum MD 500 Inlet Barrier Filter (IBF) system from AFS for commercial and military MDHI Model MD 500 series aircraft (369H/HE/HM/HS/D/E/F, AH/MH-6D/E/J/M, OH-6), a proven FAA STC/PMA approved and military qualified system. The system features a unique dual entry inlet configuration allowing the optimum airflow distribution to the engine in both hover and forward flight. The significant amount of filter area allows long service cycles (service life is a function of the operating environment) and no performance chart restrictions. Ideally suited for the MD 500 engine inlet configuration, the system does not impede airflow to the air/oil cooler and accommodates installation of an air conditioning system. The versatile dual entry design of the system provides enhanced performance over the entire flight envelope on all models of the aircraft. A Filter Maintenance Aid (FMA) for on condition monitoring of filter condition is included in the design. The AFS IBF system provides dust, sand, and dirt separation efficiencies exceeding 99% to ensure your engine has the maximum protection possible. This IBF system is available as a factory direct option on the MD 500.

Features:

The system offers a significant improvement over the existing Engine Air Particle Separator (EAPS), FOD screens or alternate inlet barrier filters. With an all new Aft composite doghouse manufactured with current techniques, this assembly is more structurally sound, lighter and less complicated than the original equipment fairing. It incorporates a new bypass door and mechanism with significantly less parts that could create FOD inside the engine inlet vs. the original design. An improvement is offered for the tail rotor control rod interface which is now not required to be removed for servicing or inspections. Physical weight savings of up to 8 lb are possible compared with the standard old configuration E model fairings with the integral surfboard. An integral Filter Maintenance Aid (FMA) allows on condition assessment of filter contamination level. One of the most attractive benefits of the system is a mission useful load increase with removal of the EAPS and/or Mist Eliminator.



Benefits:

- Proven technology with over 1,000,000 flight hours
- Lowest life cycle costs over alternate systems / Up to 3 times the filter life
- Maximum engine protection with improved engine performance
- Improved engine inlet plenum access
- Reduced engine maintenance
- Filter Maintenance Aid (FMA) for on-condition filter assessment
- Longer filter life than alternative filter systems
- Utilizes current aircraft electrical system
- Long lasting, flat filter assemblies for easy cleaning
- Easy filter removal externally
- Removal of the EAPS and/or Mist Eliminator and all associated maintenance
- Lower weight than current inertial systems
- Environmental cover included

INLET BARRIER FILTER

Approval	STC Number	A/C Approved	STC Description	
US FAA STC	SR01394LA	MD Helicopters MD500 (369H/HE/HM/HS/D/E/F)	Inlet Barrier Filter	
Canadian STC	SH04-24	MD Helicopters MD500 (369H/HE/HM/HS/D/E/F)	Inlet Barrier Filter	
European STC	EASA.IM.R.S 01067	MD Helicopters MD500 (369H/HE/HM/HS/D/E/F)	Inlet Barrier Filter	
Argentina STC	CTS-0601.05 (A)	MD Helicopters MD500 (369H/HE/HM/HS/D/E/F)	Inlet Barrier Filter	
Brazilian STC	2006S12-18	MD Helicopters MD500 (369H/HE/HM/HS/D/E/F)	Inlet Barrier Filter	
New approvals are continually being added; if you do not see your required approval, contact your DART sales office to verify the status.				
Part Number	Product Description		Kit Weight	Installation Time
102200-101	AFS MD500 Barrier Filter Kit with FMA		22.5 lb (-7 lb installed on E model)	50 Man Hours
102400-101	Filter Assembly, Upper - Spare			
102450-101	Filter Assembly, Forward - Spare			
102801-KIT	MD500 IBF Kit Cover			
Part Number	Product Description	Special Comments	Aircraft Model	Price (USD)
102200-101	AFS MD500 Barrier Filter Kit with FMA and Cover	Replaces EAPS or FOD screen.	MD500	\$21,500
102400-101	Filter Assembly, Upper - Spare		MD500	\$3,270
102450-101	Filter Assembly, Forward - Spare		MD500	\$2,640
100800-101	Service Kit	Kit includes 1 gal AFS oil and cleaner, 16oz applicator bottle with spout, cleaner/degreaser sprayer, seamer pliers	All	\$530

Cylindrical Emergency Float System



MD Helicopters MD 600N Emergency Float System is compatible with ground handling wheels and the float bags can be removed in a matter of minutes.

The mechanical valve system has no squibs or electrical requirements. The cylinder valve assemblies and floats are available as exchange items, thereby reducing maintenance and down time. All float chambers come standard with field replaceable pressure relief and inflation valves. The float bags are on-condition and do not have to be returned to the factory for recertification. Factory recertification of the system is available for customers who desire OEM services. Annual inspection of float bags, as compared with six month inspection required in some competitors' products, lowers ongoing maintenance costs of the system.

Replacement:	N/A
Floats (Number/Design):	4 (2 Fwd, 2 Aft)/Cylindrical
Float Inflation Reservoirs (Qty./Type/Gas):	1/Composite Wound/Nitrogen (3050 psi @ 70°F)
Inflation Mechanism:	Mechanical with cyclic mounted lever
Liferafts Inflation Reservoirs:	N/A
Liferafts Inflation Mechanism:	N/A
Special Design Features:	Utilizes skid extensions for Aft Float attachment
Aircraft Limitations:	Night flight over water beyond autorotational capability to ground is prohibited unless MD P/N 369D292032 Float Lamp Assembly is installed
Max. Airspeed of Inflation:	85 KIAS
Max. Airspeed Floats Inflated:	100 KIAS
Max. Towing Speed:	N/A
Maintenance / Overhaul:	Preflight, annual & 3 yrs. inspect and test / 3 yrs. Reservoirs
Exchange Program:	Available for Floats & Reservoir Assemblies.

MD 600 CYLINDRICAL EMERGENCY FLOAT SYSTEM

Approval	STC Number	A/C Approved	STC Description		
USA	SR00471LA	MD600N	Cylindrical Emergency Float System		
New approvals are continually being added; if you do not see your required approval, contact your DART sales office to verify the status.					
Part Number	Product Description			Kit Weight	Installation Time
20360-1	Emergency Float System			130.00 lb / 59.09 kg	30 hrs
Part Number	Product Description	Special Comments		Aircraft Model	Price (USD)
20360-1	Emergency Float System	Kit included 2 Fwd & 2 Aft cylindrical floats. Price is for complete float system		MD600N	\$126,184

Misc.

Bearpaws

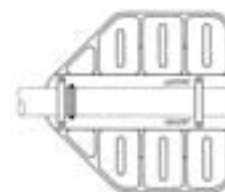
Secure Landings

For as long as helicopters have been in operation, soft terrain landings have created problems for pilots. Without Bearpaws, you may have experienced balancing problems when landing or taking off in soft terrain such as tundra, snow, or sand.

DART Bearpaws are constructed of a high density polymer, not plywood, aluminum or composite. This polymer resists cracking, chipping and breaking. The one-piece machined construction ensures consistent and deliberate load transfer. The material is also flexible, so it can deflect under high-point contact loads when landing on rocks or roots, and DART Bearpaws have an inherent memory so they return to their original shape upon take off.

Why purchase DART bearpaws?

- **Lightweight**
- **Easy to install**
- **High strength polymer with memory, deflects under critical point loading without failure and returns to original shape when unloaded**



D600-572-015

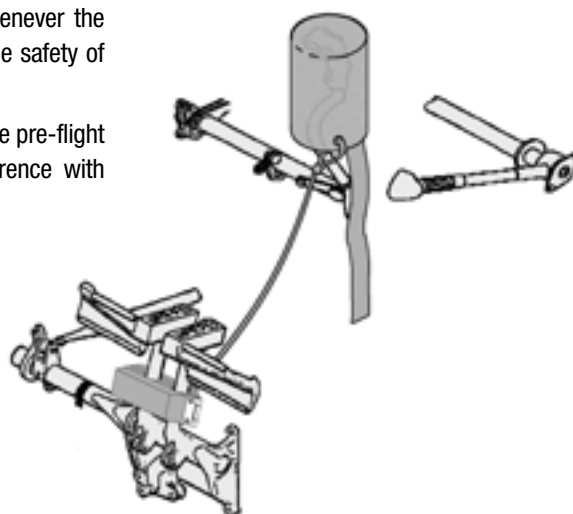
BEARPAWS				
Approval	STC Number	A/C Approved	STC Description	
Canada	SH90-17	MD600N	UHMW Polymer Bearpaw	
USA	SH849NE	MD600N	UHMW Polymer Bearpaw	
New approvals are continually being added; if you do not see your required approval, contact your DART sales office to verify the status.				
Part Number	Product Description		Kit Weight	Installation Time
D600-572-015	Bearpaw Kit		11.40 lb / 5.17 kg	2 hrs
Part Number	Product Description	Special Comments	Aircraft Model	Price (USD)
D600-572-015	Bearpaw Kit	For soft or uneven terrain landings. Price is per aircraft	MD600N	\$2,602

Aircraft Disabling Kit

The Disabling Kit can be used to physically secure and disable the aircraft whenever the aircraft is unattended. This method of securing the aircraft was developed for the safety of personnel and the environment.

Methods of removing this disabling and locking device can be incorporated into the pre-flight checklist to prevent accidental damage to the aircraft and inadvertent interference with in-flight operations.

- **No Aircraft modifications required**



AIRCRAFT DISABLING KIT				
Part Number	Product Description	Special Comments	Aircraft Model	Price (USD)
D500-745-011	Aircraft Disabling Device Kit	Kit consists of one piece hinged tail rotor pedal immobilizer. May be used in conjunction with existing key locked power supply to ensure dual disabling. Price is per lock.	MD600	\$924

Tri-Bag Emergency Float System with & without Rafts



MD Helicopters MD 900 Emergency Float System is the only float system certified for take off after a water landing for the MD 900. This system is compatible with ground handling wheels and the float bags can be removed in a matter of minutes. The electrical solenoid valve with mechanical backup is standard with this system. All hoses and fittings are stainless steel. The cylinder valve assemblies, floats and liferafts are available as exchange items, thereby reducing maintenance and down time. All float chambers come standard with field replaceable pressure relief valves and inflation valves. The float bags are on-condition and do not have to be returned to the factory for recertification. Factory recertification of the system is available for customers who

desire OEM services. Annual inspection of float bags, as compared with six month inspection required in some competitors' products, lowers ongoing maintenance costs of the system. The Emergency Float/Liferaft System includes all of the benefits listed for the MD 900 Emergency Float System. In addition, this system incorporates two patented, integrated, externally mounted six man liferafts with survival kits. The liferaft system weighs 74 lb which is approximately one third of the weight of comparable jettison liferaft systems.

Replacement:	N/A
Floats (Number/Design):	4 (2 Fwd, 2 Aft)/Tri-Bag
Float Inflation Reservoirs (Qty./Type/Gas):	2 Reservoirs (single assy)/Composite Wound/Helium (4500 psi @ 70°F)
Inflation Mechanism:	(-100): Electrical by cyclic switch with mechanical backup (center console mounted T-handle), (-200): Mechanical with cyclic mounted lever
Liferafts (Number/Design):	2/Six man with survival kits
Liferafts Inflation Reservoirs:	1/Composite Wound/Nitrogen (2475 psi @ 70°F)
Liferafts Inflation Mechanism:	Mechanical from cockpit
Special Design Features:	Utilizes skid extensions for Aft Float attachment. Patented integrated Floats/Liferafts (20754)
Aircraft Limitations:	Maximum pressure altitude for float inflation is 5500 ft.
Max. Airspeed of Inflation:	90 KIAS
Max. Airspeed Floats Inflated:	90 KIAS
Max. Towing Speed:	10 kts
Maintenance / Overhaul:	Preflight, annual & 3 yrs. inspect and test / 3 yrs. Reservoirs & Liferafts
Exchange Program:	Available for Floats, Liferafts & Reservoir Valve Assemblies.

MD 900 TRI-BAG EMERGENCY FLOAT SYSTEM WITH & WITHOUT RAFTS

Approval	STC Number	A/C Approved	STC Description	
USA	SR01205LA	MD900		
USA	SR01263LA	MD900		
EASA	EASA.IM.R.S.0039	MD900	Tri-Bag Float System with Raft	
China	VSTC0040A	MD900	Tri-Bag Float System	
New approvals are continually being added; if you do not see your required approval, contact your DART sales office to verify the status.				
Part Number	Product Description		Kit Weight	Installation Time
20754-100	Tri-Bag Float System with Rafts		232.00 lb / 105.45 kg	30 hrs
20754-200	Tri-Bag Float System with Rafts		232.00 lb / 105.45 kg	30 hrs
20744-100	Tri-Bag Float System		158.00 lb / 71.82 kg	30 hrs
20744-200	Tri-Bag Float System		158.00 lb / 71.82 kg	30 hrs
Part Number	Product Description	Special Comments	Aircraft Model	Price (USD)
20754-100	Tri-Bag Float System with Rafts	Kit included 2 Fwd & 2 Aft Tri-Bag floats with integrated rafts. Mechanical/electrical inflation mechanism. Price is for complete float with rafts system	MD900	\$179,025
20754-200	Tri-Bag Float System with Rafts	Kit included 2 Fwd & 2 Aft Tri-Bag floats with integrated rafts. Mechanical inflation mechanism. Price is for complete float with rafts system	MD900	\$173,775
20744-100	Tri-Bag Float System	Kit included 2 Fwd & 2 Aft Tri-Bag floats. Mechanical/electrical inflation mechanism. Price is for complete float system	MD900	\$135,450
20744-200	Tri-Bag Float System	Kit included 2 Fwd & 2 Aft Tri-Bag floats. Mechanical inflation mechanism. Price is for complete float system	MD900	\$129,150

Bearpaws

Bearpaws

Secure Landings

For as long as helicopters have been in operation, soft terrain landings have created problems for pilots. Without Bearpaws, you may have experienced balancing problems when landing or taking off in soft terrain such as tundra, snow, or sand.

DART Bearpaws are constructed of a high density polymer, not plywood, aluminum or composite. This polymer resists cracking, chipping and breaking. The one-piece machined construction ensures consistent and deliberate load transfer. The material is also flexible, so it can deflect under high-point contact loads when landing on rocks or roots, and DART Bearpaws have an inherent memory so they return to their original shape upon take off.

Why purchase DART bearpaws?

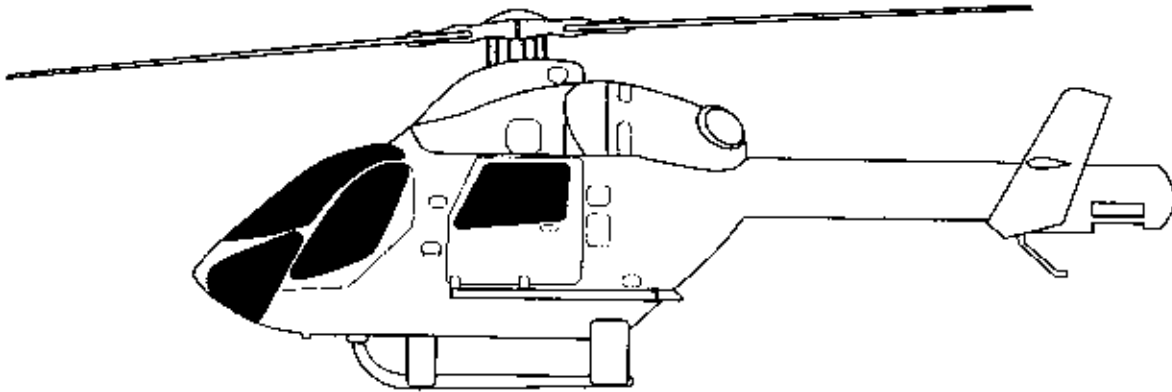
- Lightweight
- Easy to install
- High strength polymer with memory, deflects under critical point loading without failure and returns to original shape when unloaded

BEARPAWS					
Approval	STC Number	A/C Approved	STC Description		
USA	SR00903SE	MD900	UHMW Polymer Bearpaw		
Germany	RC 1183	MD900	UHMW Polymer Bearpaw		
New approvals are continually being added; if you do not see your required approval, contact your DART sales office to verify the status.					
Part Number	Product Description		Kit Weight	Installation Time	
D900-619-011	Bearpaw Kit		13.80 lb / 6.30 kg	2 hrs	
Part Number	Product Description	Special Comments		Aircraft Model	Price (USD)
D900-619-011	Bearpaw Kit	For soft or uneven terrain landings. Price is per aircraft		MD900	\$4,111



D900-619-011

Forward & Cabin Windows



MD 900 EXPLORER FORWARD WINDOW

Part Number	Product Description	O.E.M. Part Number	Price (USD)	PMA Number
9004952-1	L/H Fwd Window with Slide	900F2305143-101	\$2,865	PQ0327SW
9004952-2	R/H Fwd Window with Slide	900F2305143-102	\$2,865	PQ0327SW
9004952-2001	L/H Fwd Window with Large Slide	900F2305143-101	\$2,865	PQ0327SW
9004952-2002	R/H Fwd Window with Large Slide	900F2305143-102	\$2,865	PQ0327SW

MD 900 EXPLORER CABIN WINDOW

Part Number	Product Description	O.E.M. Part Number	Price (USD)	PMA Number
9004951-1	L/H Cabin Window with Large Slide	900F2305277-101	\$3,165	PQ0327SW
9004951-2	R/H Cabin Window with Large Slide	900F2305277-102	\$3,165	PQ0327SW
9004951-3	L/H Cabin with Reverse Slide	900F2305277-101	\$3,327	PQ0327SW
9004951-4	R/H Cabin with Reverse Slide	900F2305277-102	\$3,327	PQ0327SW

Does not include hardware. Replacement window only.

PLASTIC CLEANER

Part Number	Product Description	Special Comments	Aircraft Model	Price (USD)
FP006	NORDAM 210 Cleaner	Price is per 14 fl. Oz. Bottle. Sold in cases of 12 bottles.	ALL	Contact Sales

Maintenance Made Easy

Inlet Barrier Filters - AFS

Product Description:

Aerospace Filtration Systems (AFS) introduces a unique Inlet Barrier Filter (IBF) system for the MD Helicopters MD900/902 Explorer. Using technology fielded and proven on commercial and military helicopters, the AFS MD900/902 IBF provides the optimum performance possible utilizing the existing MDHI cowl and features an innovative, lightweight, simple to install replacement for the less capable Inlet Particle Separator (IPS) or FOD Screen. The AFS IBF system provides dust, sand, and dirt separation efficiencies exceeding 99% to ensure your engine has the maximum protection possible. At the same time, the IBF improves air flow versus the IPS, meaning more power, reduced operating temps and longer engine life. Performance improvements in the aircraft yield approximately 20 degrees more MGT margin compared to the IPS. Operators can attain the ROI for a barrier filter system within one engine overhaul cycle, even in a relatively clean environment.

Features:

The two lightweight conformal filters are designed to perform with ultimate efficiency in all flight regimes. With a 1,500-hour life, the significant amount of filter area allows cleaning service cycles as long as 100 hours or annually (service life is a function of the operating environment). The assemblies are self-contained and structurally integrated into the existing manufacturer's inlet/cowl provisions. Remove the IPS and install the AFS IBF with minimal modification effort. External, conformal mounting design allows easy access to the filter element. The filters can be removed and replaced in 15 minutes, allowing easy maintenance in the field. AFS design utilizes the existing MDHI bypass system, which is part of the Inlet Particle Separator modification. Engine water wash regimens can be maintained, and filters do not require removal to perform the water wash. Sturdy conformal inlet covers are standard for added protection during non-operating conditions. This IBF system is available as a factory direct option on the MD900/902 Explorer. If the aircraft is not equipped with the MDHI bypass system, contact MDHI for possible retrofit options.



Benefits:

- Proven technology with over 1,000,000 flight hours
- Approximate 20 degrees MGT reduction (IPS removed)
- Lowest life cycle costs over alternate systems
- Maximum engine protection, improved performance
- Improved engine inlet plenum access
- Reduced engine maintenance/costs
- Bypass feature utilizing existing MDHI design
- Long lasting, dual filters, easy cleaning
- Easy filter access and removal
- Environmental cover included

INLET BARRIER FILTER

Approval	STC Number	A/C Approved	STC Description	
USA	SR02525CH	MD900/902	Inlet Barrier Filter	
New approvals are continually being added; if you do not see your required approval, contact your DART sales office to verify the status.				
Part Number	Product Description	Kit Weight	Installation Time	
114001-101	AFS MD900 Barrier Filter Kit	17.0 lb	25 Man Hours	
114300-101	Filter Assembly, Left			
114300-102	Filter Assembly, Right			
Part Number	Product Description	Special Comments	Aircraft Model	Price (USD)
114001-101	AFS MD900 Barrier Filter Kit with Cover		MD900/902	\$32,320
114300-101	Filter Assembly, Left		MD900/902	\$6,500
114300-102	Filter Assembly, Right		MD900/902	\$6,500
100800-101	Service Kit	Kit includes 1 gal AFS oil and cleaner, 16oz applicator bottle with spout, cleaner/degreaser sprayer, seamer pliers	All	\$530



DART Helicopter Services, LLC

P.O. Box 430, Piney Flats, TN 37686

Sales Office

1-800-556-4166 or 1-613-632-3336

Fax: 1-613-632-4443

Email: sales@darthelicopterservices.com

Prices shown in the catalog are in US dollars and are subject to change without notice.
For more information on DART Helicopter Services and the most current pricing and product updates,
please visit our website:

www.darthelicopterservices.com



For more information or to place an order call

1-800-556-4166 or 1-613-632-3336

or visit us at

www.darthelicopterservices.com